

Orchardleigh Farm Stone Allerton, Axbridge, BS26 2NG

Offers In Excess Of £2,250,000





Offers In Excess Of £2,250,000

Orchardleigh Farm Stone Allerton

Axbridge, BS26 2NG

- Contemporary styled five-bedroom detached country house
- Approx. 12 acres including gardens and productive apple orchard
- Separate well-appointed three-bedroom holiday cottage of over 1100 sq ft
- Flexible lifestyle and income-generating opportunity
- Situated near the village of Stone Allerton, Axbridge with good transport links
- Excellent potential for multi-generational living
- Currently an established and thriving cider business
- Block-built tractor barn with workshop and stock room
- Rural setting with far-reaching countryside views

An exceptional lifestyle property combining contemporary country living, currently an established and successful rural cider business, set within approximately 12 acres of gardens and a long-established orchard in the sought-after Somerset countryside. The principal residence is a contemporary-styled five bedroom detached home offering spacious and well-presented accommodation with a further three bedroom cottage in the grounds with further barn and outbuildings. The new owners could build on the foundations of the business or simply revert to selling the apples each year, running the holiday cottage.



Description

Bramley Cottage

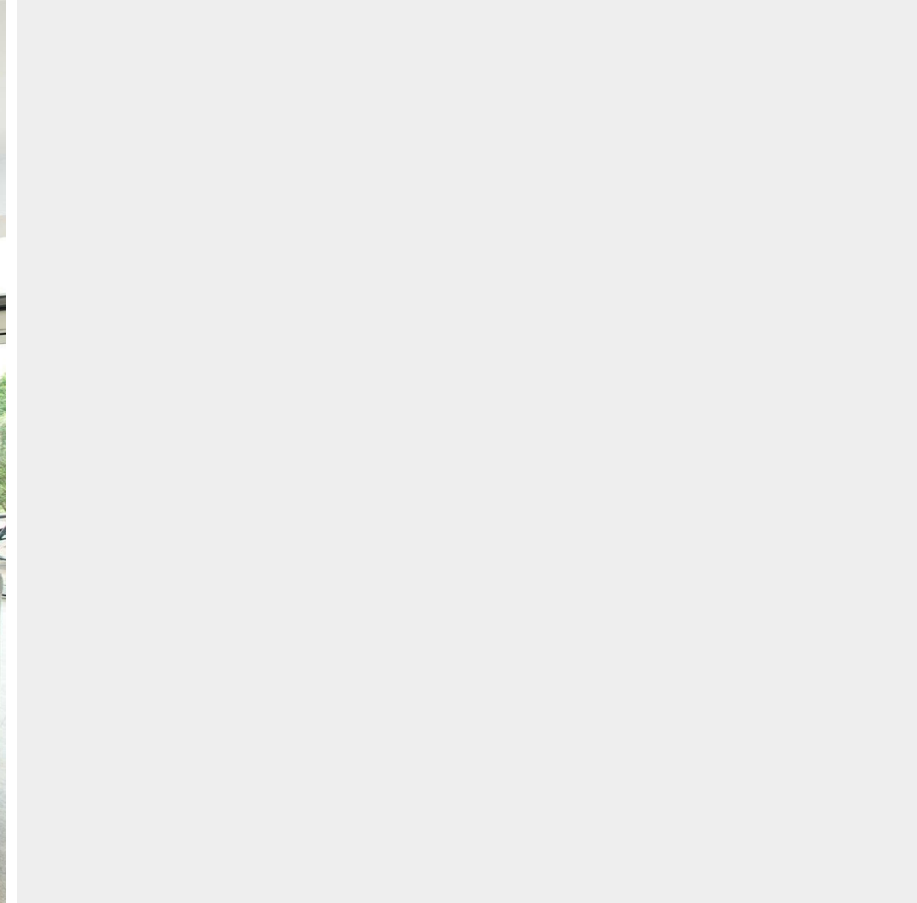
Outside

Location

Key Features

Buyer Verification Checks



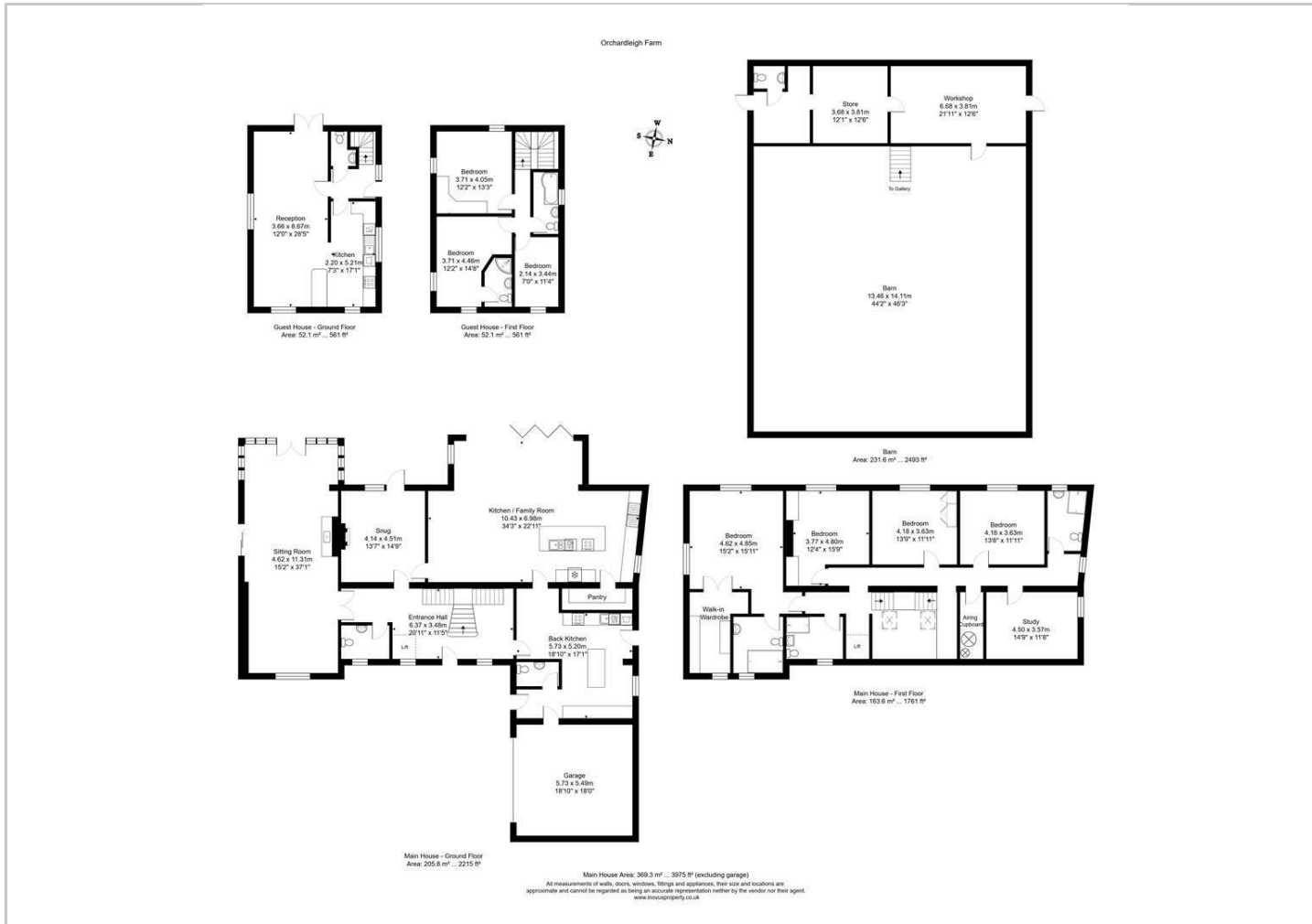


Directions

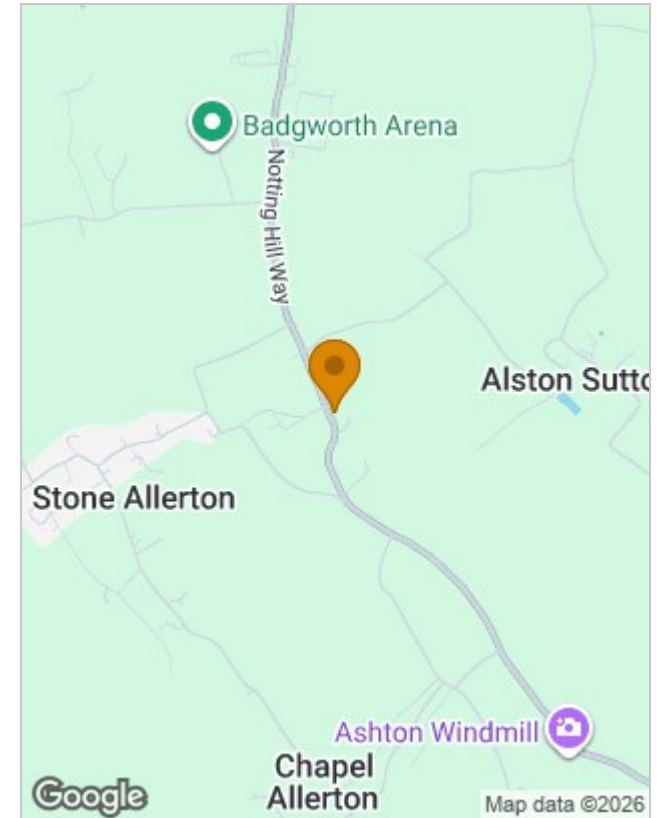




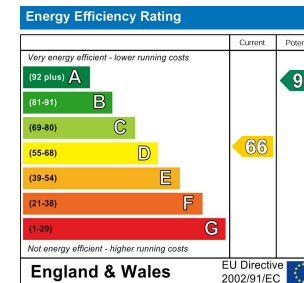
Floor Plans



Location Map



Energy Performance Graph



Viewing

Please contact our Bath Office on 01225 904999 if you wish to arrange a viewing appointment for this property or require further information.

The particulars are set out as a general outline only for the guidance of intended purchasers or lessees, and do not constitute, any part of a contract. Nothing in these particulars shall be deemed to be a statement that the property is in good structural condition or otherwise nor that any of the services, appliances, equipment or facilities are in good working order. Purchasers should satisfy themselves of this prior to purchasing.